

Transfer Training for the professional era: A national approach

T Hirst^{1,2}, C Hickinbottom³, B Jones¹, M Jenkins¹ & M Slattery^{1,4}

1. Adult Critical Care Transfer Service (ACCTS) Cymru, 2. London School of Anaesthesia,
3. Welsh School of Anaesthesia, 4. Guys & St Thomas' NHS Foundation Trust

Introduction

Transport of critically ill patients between specialist hospitals is an essential element of modern, networked care. However, this has traditionally been conducted by ad-hoc teams of hospital staff on unfamiliar NHS ambulance service vehicles.

The best representation of ad-hoc transfer practice is from a 2020 study of legacy critical care transfers in the Southwest Critical Care Network¹ which found:

24%



Transfer doctors more junior than registrar

46%



Out of Hours Transfers

7%



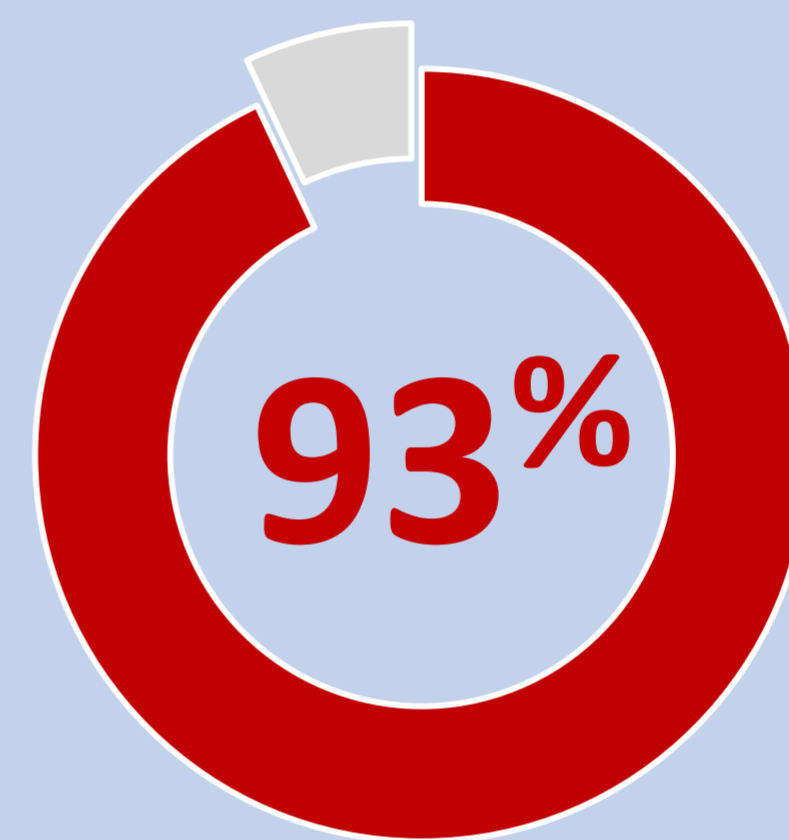
Critical Incidents

Recent commissioning of specialist critical care transfer services has addressed the need for specialist, professionalised care in transfer. However, stabilisation and transfer of critically ill patients are key skills recognised by anaesthetics and ICM curricula, necessitating training opportunities to acquire and maintain these skills.

The challenge for training programmes is to find the ideal formula to maximise patient safety in transfer, but maintain structured training opportunities for junior and senior trainees.

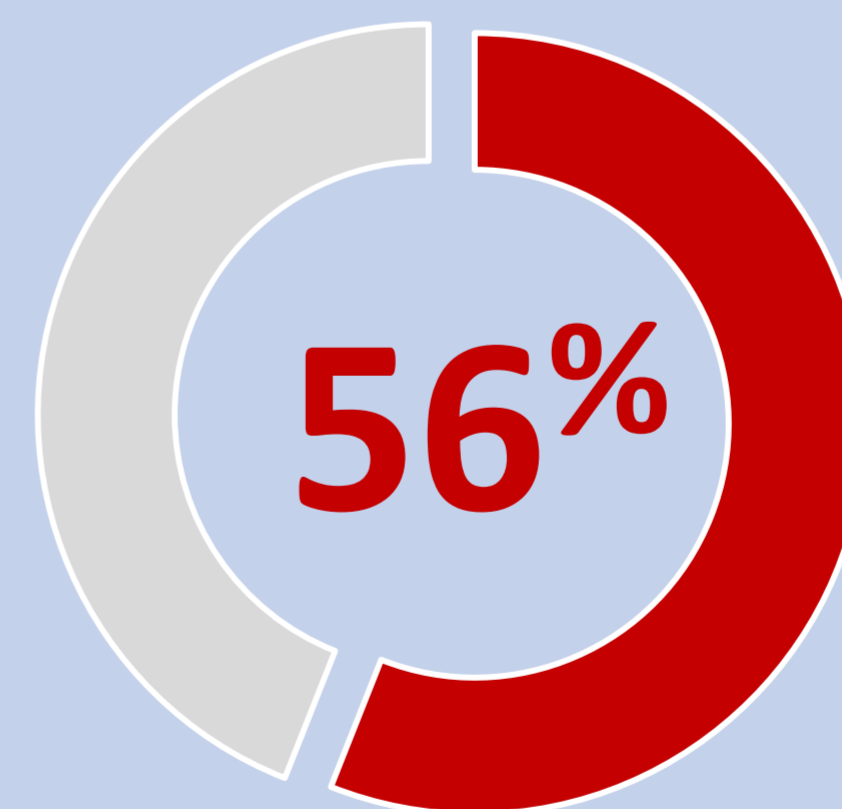
Background

A 2023 trainee-led survey in the Welsh school of anaesthesia, evaluated the training impact of our specialist transfer service on trainee involvement in transfer. 62 responses were obtained representing all training grades:



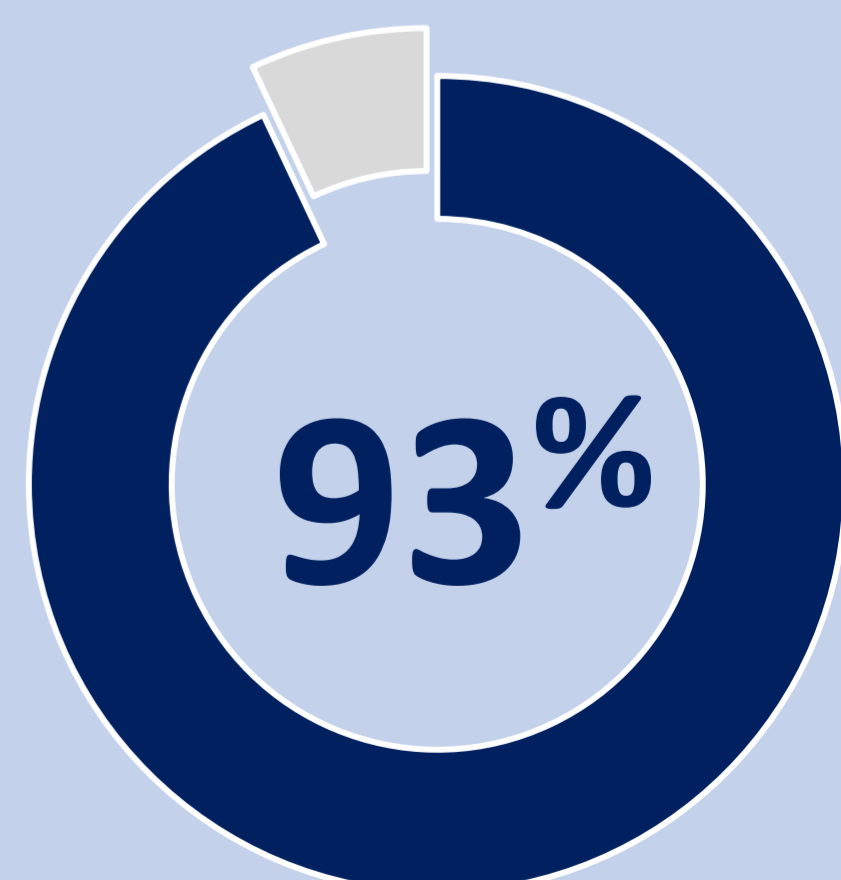
Trainees reported reduced exposure to transfers

Trainees had not performed a transfer in the last year



Trainees reported difficulty completing 'Resuscitation & Transfer' module

Trainees felt they would benefit from a transfer service attachment



ACCTS Cymru

Our specialist transfer service has operated since 2021, facilitating equity of access to specialist services for critically ill adults nationwide. As the majority provider of critical care transfers in Wales we can provide for trainees:

- 3 clinical teams per day for clinical attachments*
- Dedicated remote ICM consultant for clinical support & WPBAs*
- Bespoke ambulances with accommodation for extra team members
- Tailored levels of on-transfer supervision by experienced clinicians
- Monthly clinical governance days with case reviews & external speakers

*3rd team and consultant available 2 days per week pending service expansion



Training Opportunities Roadmap

Stage 1	Stage 2	Stage 3
<ul style="list-style-type: none"> • All-Wales Transfer Course* ✓✓ • Clinical governance day** ✓✓ • Clinical observer shift** ✓✓ • 7-day transfer placement*** * ✓ 	<ul style="list-style-type: none"> • Bank transfer doctor Posts* ✓✓ • Specialist training days** ✓✓ 	<ul style="list-style-type: none"> • Bank transfer doctor posts* ✓✓ • 14-day transfer placement ✓ • SIA/SSY placements ✓✓ • DipRTM exam support* * *

*Faculty & vehicles provided to every course

** Available on request to all Welsh trainees

*** Formal agreement for all ICM trainees and Anaesthetic trainees from 1 health board

* Subject to competitive recruitment process

** Available on request to all Welsh trainees

* Subject to competitive recruitment process

** For suitably experienced candidates

Anaesthetic Trainees **ICM Trainees**

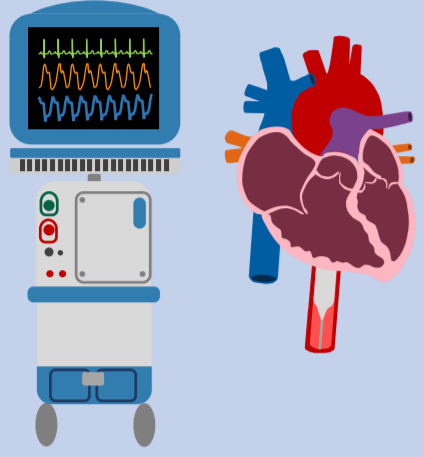
We were proud to offer the first FICM SSY placement in transfer medicine in the UK

6 Clinicians have been supported in sitting the Diploma in Retrieval & Transfer Medicine (DipRTM)

We are able to offer sessional opportunities to trainees completing training with transfer medicine experience

Specialist Training

Aimed at clinicians with experience of transfer medicine, to support decision making and practice in more complex and nuanced transfer situations. We offer training days several times per year in:



**Aortic balloon pumps,
mechanical support
& cardiogenic shock**



**Coordination &
logistics of critical
care transfers**



**Advanced
mechanical
Ventilation***

*Commencing 2024

Residential Induction

We have developed a unique multidisciplinary residential induction focused on building teams of transfer physicians, transfer practitioners and transfer assistants. Run over 7 days, with a diverse faculty of hospital, transfer and prehospital clinicians, we deliver lectures, skills stations and over 20 unique high-fidelity simulations based around actual transfers and clinical incidents.



We offer residential training to trainees joining for bank work, OOPE fellowships, SIA and SSY placements. A truncated version is offered to those joining for shorter attachments. Opportunities to teach as faculty are also facilitated for more experienced trainees.

Our unique approach to transfer team training has been recognised for its innovation at the Academy of Medical Educators international conference.

Conclusions

The continued expansion of adult critical care transfer services, as part of the UK revolution in professional critical care transfer medicine, represents an opportunity for training as well as marked improvement in safe, effective care for patients. Thanks to regular, reliable access to transfers and expert supervision, trainees can develop their practice in interhospital transfer in a way previously not possible. Appropriate opportunities can be delivered for trainees from anaesthetics and intensive care across all 3 stages of the curriculum and beyond into consultant practice.

We demonstrate our educational delivery for intensive care and anaesthetic trainees in Wales, as an example how mutually beneficial regional arrangements can be developed between transfer services and training programmes.

References

1. Grier S, Critical Care Transfer in an English critical care network: Analysis of 1124 transfers delivered by an ad-hoc system. *J Intensive Care Soc.* 2020 21(3): 33-39